

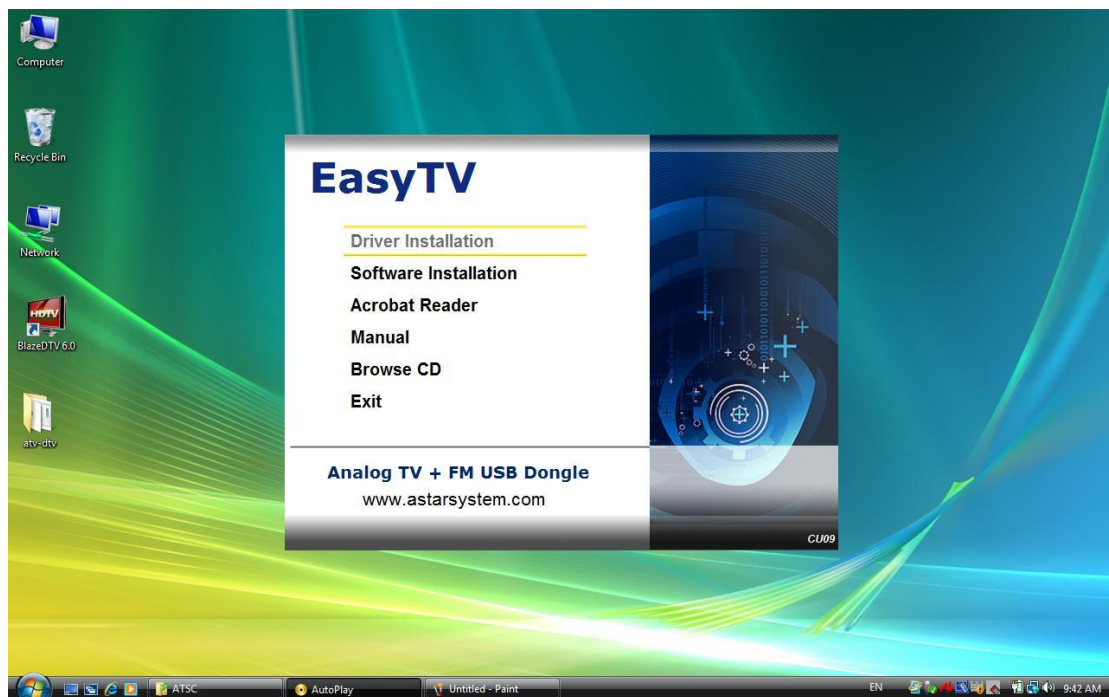
CU09

USB Analog TV Dongle Software Installation Manual

Dongle USB TV Analógica Manual de Instalação de Software

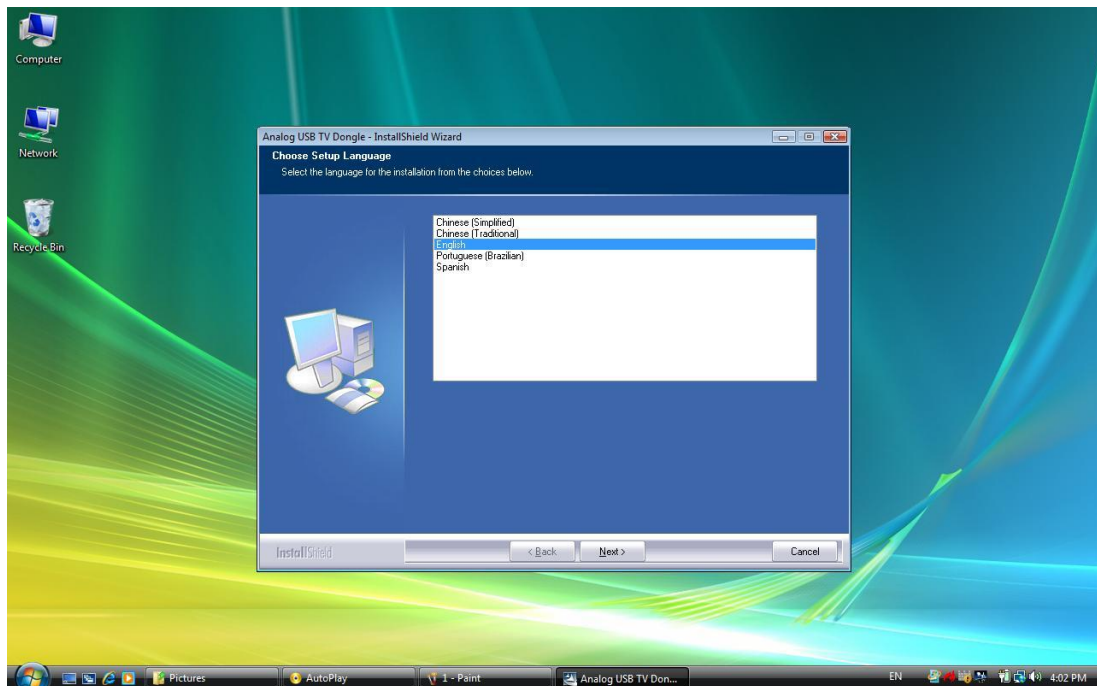
Step-01: Inserting the CD and use AUTORUN, select **Driver Installation**

Passo-01: Inserir o CD e usar AUTORUN, selecione **Instalação Driver**



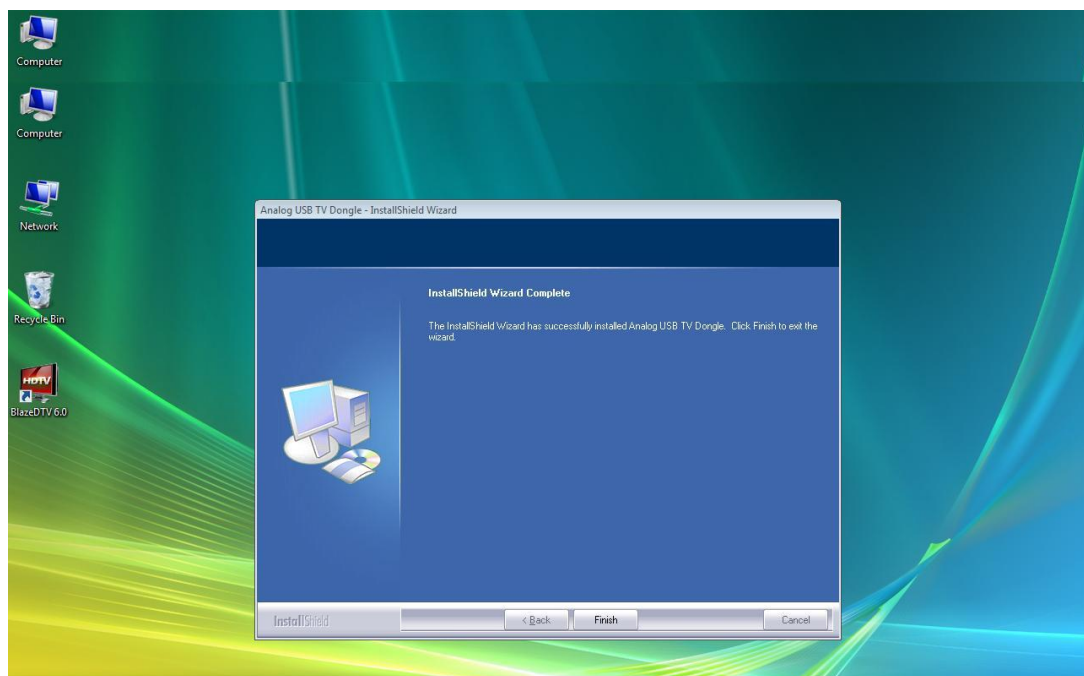
Step-02: AUTORUN will install the driver first. As the following picture show:

Passo-02: AUTORUN irá instalar o primeiro driver. como mostra figura a seguir.



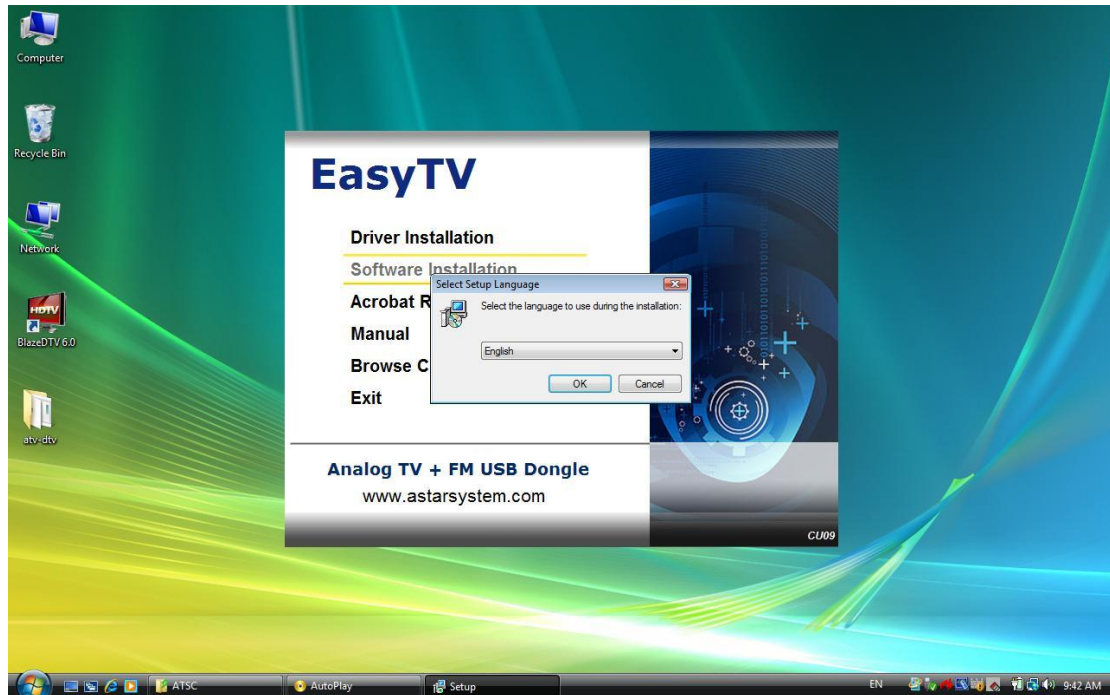
Step-03: Driver install finished, wait several second.

Passo-03: Driver de instalação terminar, espere alguns segundo.



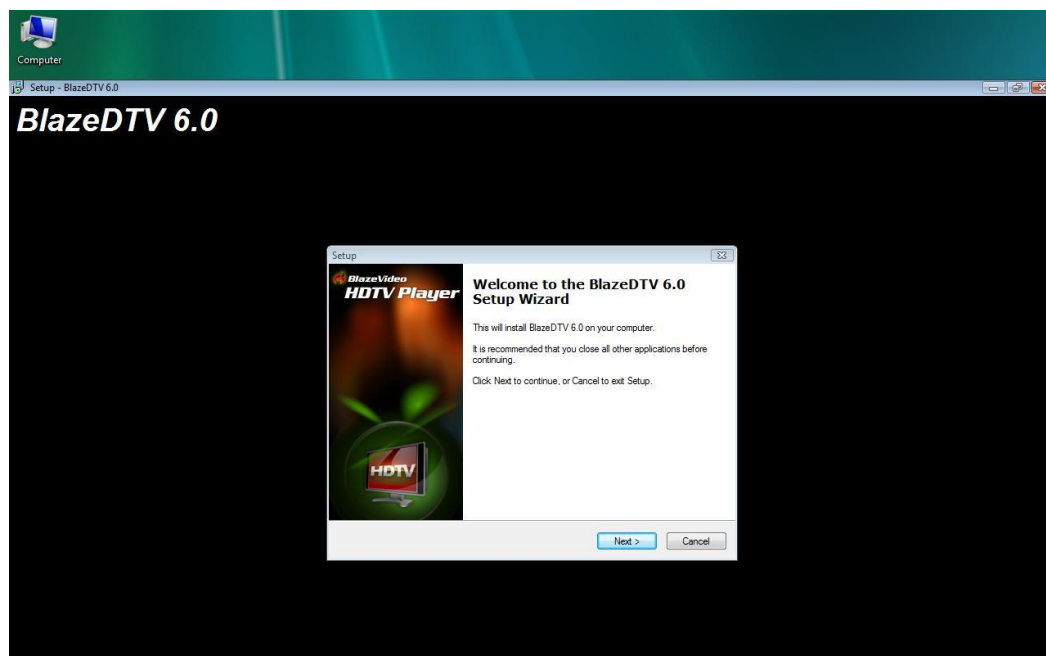
Step-04: Select **software Installation**

Passo-04: selecione **Instalação Player**



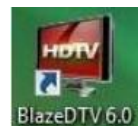
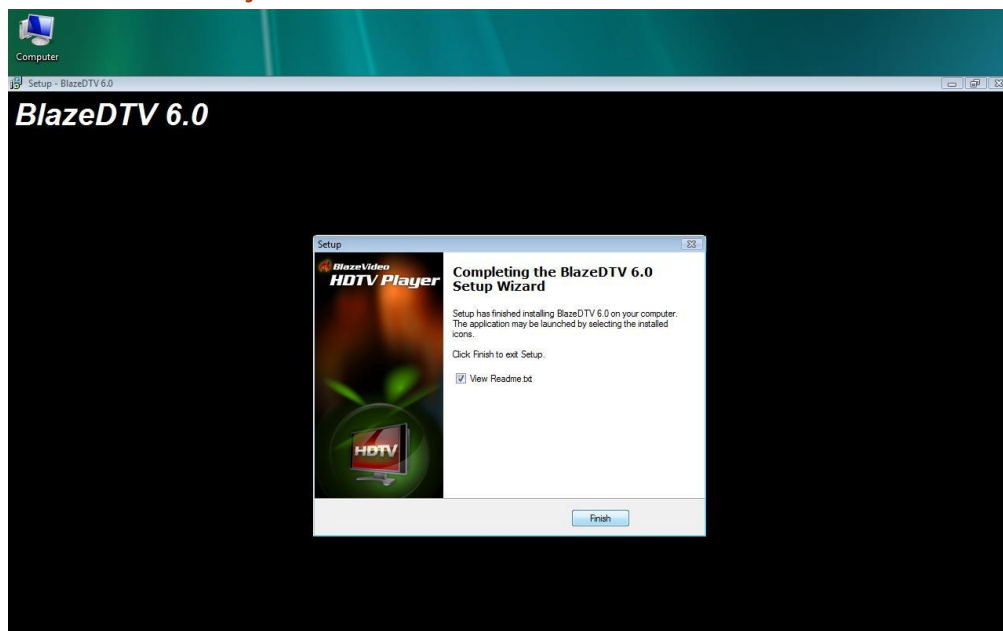
Step-05: AP Installation....


Passo-05: Instalação AP

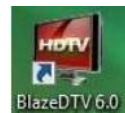


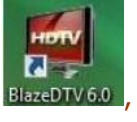
Step-06: AP Installation finished.

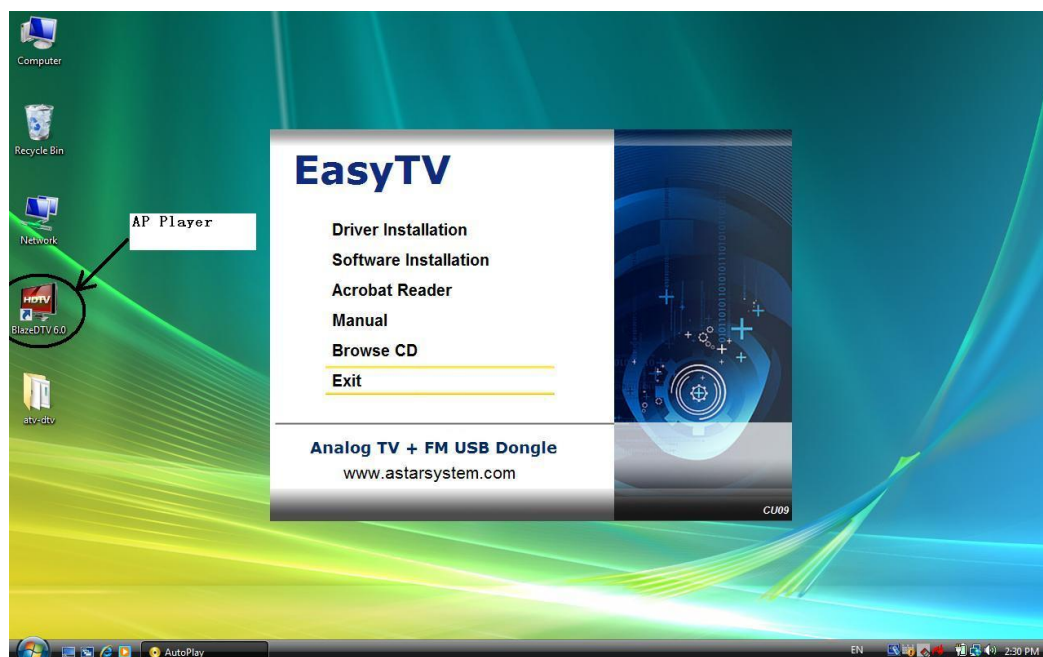
Passo-06: Instalação AP acabado.



Step-07: Insert The USB dongle, Select the , make sure you have connect an analog TV cable to our USB TV dongle, it can working now.

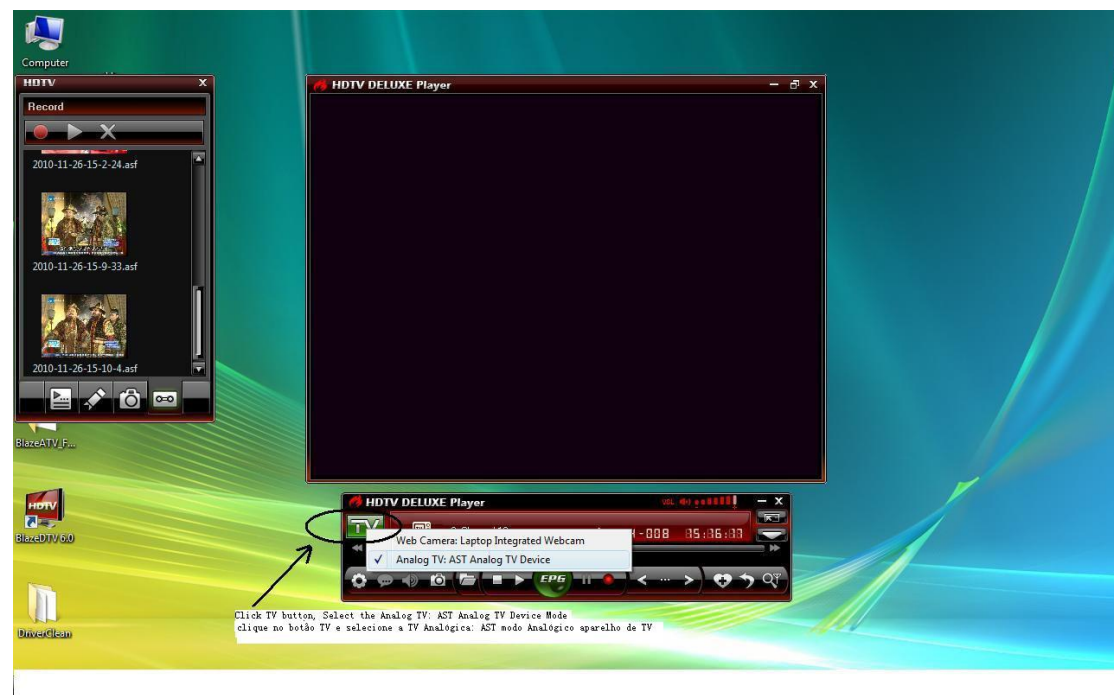



Passo-07: Inserir o dongle USB, selecione o , certifique-se que ligar um cabo de TV analógico para o nosso dongle USB TV, ele pode trabalhar agora.




Step-08: Open the Player, click the TV button, and select the **Analog TV: AST Analog TV device** mode

Passo-08: Abra o Player, clique no botão TV e selecione a **Analog TV: AST Analog TV device**



Step-09: Click the channel scan button , select Cable or Antenna, and then select your country or region or Standard, click [OK] to start scan channel

Passo-09: Clique no botão de busca de canais por cabo ou antena selecionar , e selecione seu país ou região, ou Padrão, clique em [OK] para iniciar a digitalização do canal



Right click and select help for more detail player user manual

Botão direito do mouse e selecione de ajuda para mais detalhes manual do usuário jogador